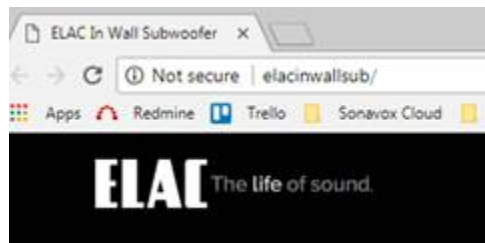


Recommended update procedure for Ethernet based amplifiers

September 2018

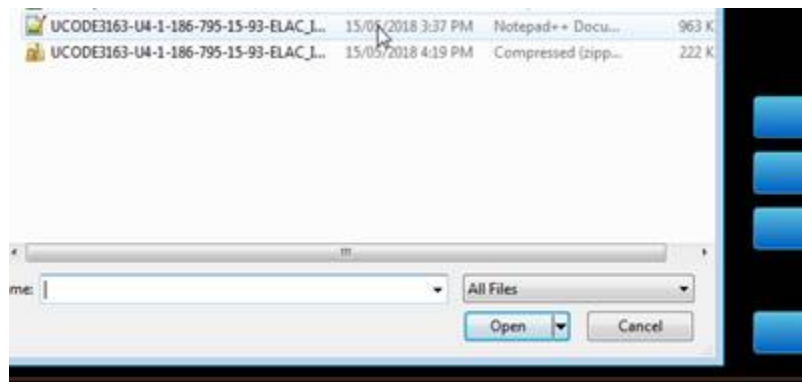
1. System setup recommendations
 - Use the Chrome browser to provide upload progress indicator shown in % at the bottom left corner.
 2. Updating both firmware and web page
- 2.1 Upload firmware:
- a) Open the web page of the amplifier. You can use the ip address or just type the name (the image below shows the default name):



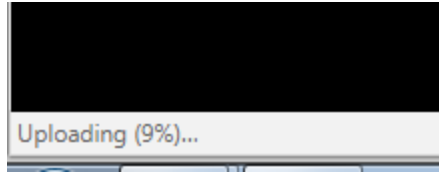
- b) Click on Update Firmware button.



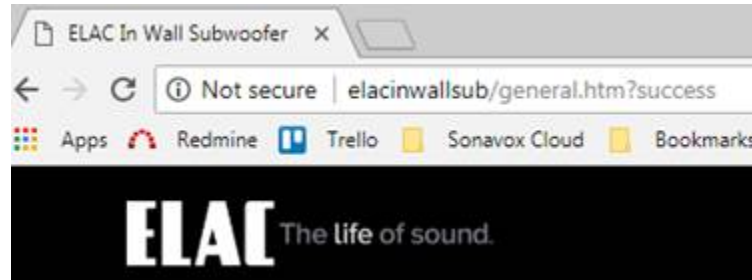
- c) Select the UCODE file



- d) You will have progress in Chrome at the bottom left corner:



- e) Url changes adding “?success” at the end



- f) Reload the web page (you may have to do this couple of times) and confirm firmware revision is the new one:



- g) Next, unplug power from the amplifier for at least 1 minute and then reapply power. (The update process is now complete)

2.2 Update Web GUI (Only if new firmware is available.

- a) click on Update Web GUI

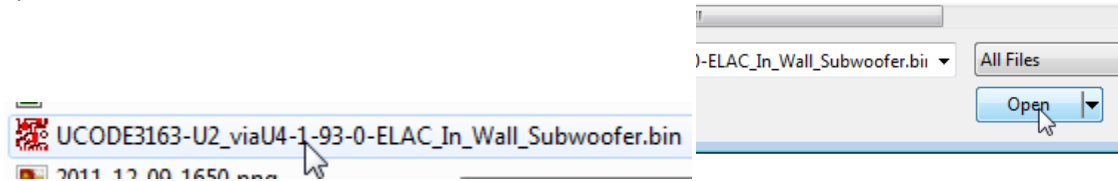


- b) you will be transferred to a dedicated web page:



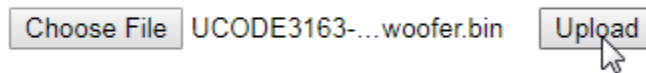
Note: you can always access this page by typing the ip address of the amplifier followed by “/mpfsupload”

- c) click on “Choose File” and select the *.bin file containing the code for the new web page and click open.

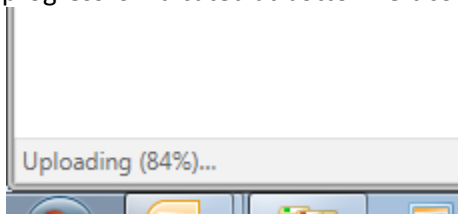


- d) click “Upload”

MPFS Image Upload



- e) progress is indicated at bottom left corner (Chrome browser)



- f) after upload you see the success message:

MPFS Update Successful

[Site main page](#)

- g) the web page is up to date. You can click on the link to go to the main page.



